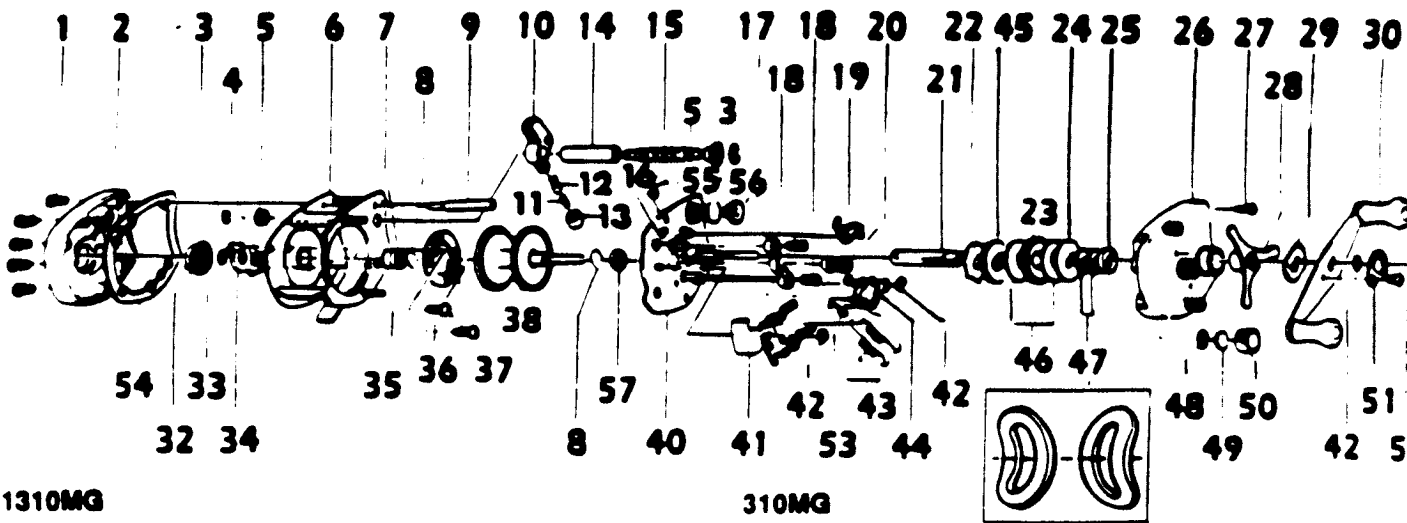


QUANTUM 1310MG/310MG



1310MG

KEY PART NO.	DESCRIPTION	PRICE
1	CE4000 SPARE PARTS W/WRENCH	3.44
2	CE4100 LEVEL WIND HOOD	4.53
3	T130 WRENCH	2.41
4	1 LX4102 RIGHT SIDE PLATE SCR.	.92
5	2 NX4101 LEFT SIDE PLATE	7.46
6	3 CX4152 WORN SHAFT RETAINER	.29
7	4 CX4301 MAGNET RET. SPRING	.34
8	5 CX4156 WORN GUARD BUSHING	.58
9	6 NX4051 FRAME	20.06
10	7 CX4252 SPOOL SHFT BEARING	7.46
11	8 CX4253 BEARING RETAINER	.34
12	9 BX4159 FRAME POST- SILVER	1.43
13	10 NX4201 LINE GUIDE	7.05
14	11 CX4203 LINE GUIDE PAWL SPRING	.34
15	12 CX4202 LINE GUIDE PAWL	2.07
16	13 CX4204 PAWL CAP	.85
17	14 BX4158 WORN SHFT GUARD-SILVER	2.46
18	15 CX4151-1 WORN SHAFT W/O GEAR	3.44
19	16 CX4502 SPOOL RELEASE SPRING	.34
20	17 CX4401 PINION YOKE	.58
21	18 CX4403 PINION YOKE SPRING	.34
22	19 CX4452-1 DOUBLE ANTI-REV PAWL	3.15
23	20 NX4256 PINION GEAR	8.60
24	21 CX4452 DRIVE SHAFT	3.44
25	22 CX4451-1 RELEASE RATCHET	1.14
26	23 NX4681 DRIVE GEAR	5.73
27	24 CX4659 DRAG WASHER B	.58
28	25 CX4254 DRIVE SHFT BUSH	.58
29	26 NX4103 RIGHT SIDE PLATE	14.84
30	27 LX4382 LEFT SIDE CVR SCREW	.39
31	28 NX4663 STAR DRAG	4.87
32	29 CX4660 HANDLE WASHER	.34
33	30 NX4701 HANDLE ASSY.	5.73
34	31 NX4702 HANDLE NUT	.85
35	32 NX4303 MAGNETIC CONTROL DIAL	1.14
36	33 CX4250 O RING	.46
37	34 CX4261 MAGNET RET. SUPPORT	1.37
38	35 CX4258 SPOOL TENSION SHIM A	.34
39	36 CX4602 MAGNET RETAINER SCREW	.58
40	37 CX4257 MAGNET RETAINER	8.02
41	38 CX4251 SPOOL ASSY	12.46
42	40 NX4351 SET PLATE	17.14
43	41 NX4402 SPOOL RELEASE BUTTON	2.46
44	42 CX4664 RETAINER CLIP	.34
45	43 CX4353 SET PLATE ACT. SPRING	.34
46	44 CX4503-1 SET PLATE ACTUATOR B	1.14
47	45 CX4658-1 ANTI-REVERSE RATCHET	4.53
48	46 CX4661 DRAG WASHER A	.34
49	47 CX4662 DRIVE SHAFT SPR. WMBR	.34
50	48 CX4258 O RING	.34
51	49 CX4302 SPOOL TENSION SHIM B	.34
52	50 NX4259 SPOOL TENSION IDIOS	2.24
53	51 LX4703 HANDLE NUT LOCK	1.14
54	52 LX4704 HANDLE NUT LOCK SCR.	.46
55	53 CX4501-1 SET PLATE ACTUATOR A	1.14
56	54 NX4107 LEFT SIDE PLATE SPACER	1.72
57	55 CX4153 GEAR RETAINING CLIP	.29
	56 NX4150 WORN SHAFT GEAR	4.02
	57 BX4157 SPOOL SHFT BEARING	7.46

310MG

KEY PART NO.	DESCRIPTION	PRICE
1	CE4000 SPARE PARTS W/WRENCH	3.44
2	CE4100 LEVEL WIND HOOD	4.53
3	T130 WRENCH	2.41
4	1 LX4102 RIGHT SIDE PLATE SCR.	.92
5	2 NX4101 LEFT SIDE PLATE	7.46
6	3 CX4152 WORN SHAFT RETAINER	.29
7	4 CX4301 MAGNET RET. SPRING	.34
8	5 CX4156 WORN GUARD BUSHING	.58
9	6 NX4051 FRAME	20.06
10	7 BX4156 SPOOL SHFT BUSHING	2.51
11	8 CX4253 BEARING RETAINER	.34
12	9 BX4159 FRAME POST- SILVER	1.43
13	10 NX4201 LINE GUIDE	7.05
14	11 CX4203 LINE GUIDE PAWL SPRING	.34
15	12 CX4202 LINE GUIDE PAWL	2.07
16	13 CX4204 PAWL CAP	.85
17	14 BX4158 WORN SHFT GUARD-SILVER	2.46
18	15 CX4151-1 WORN SHAFT W/O GEAR	3.44
19	16 CX4502 SPOOL RELEASE SPRING	.34
20	17 CX4401 PINION YOKE	.58
21	18 CX4403 PINION YOKE SPRING	.34
22	19 CX4452-1 DOUBLE ANTI-REV PAWL	3.15
23	20 NX4256 PINION GEAR	8.60
24	21 CX4452 DRIVE SHAFT	3.44
25	22 CX4451-1 RELEASE RATCHET	1.14
26	23 NX4681 DRIVE GEAR	5.73
27	24 CX4659 DRAG WASHER B	.58
28	25 CX4254 DRIVE SHFT BUSH	.58
29	26 NX4103 RIGHT SIDE PLATE	14.84
30	27 LX4382 LEFT SIDE CVR SCREW	.39
31	28 NX4663 STAR DRAG	4.87
32	29 CX4660 HANDLE WASHER	.34
33	30 NX4701 HANDLE ASSY.	5.73
34	31 NX4702 HANDLE NUT	.85
35	32 NX4303 MAGNETIC CONTROL DIAL	1.14
36	33 CX4250 O RING	.46
37	34 CX4261 MAGNET RET. SUPPORT	1.37
38	35 CX4258 SPOOL TENSION SHIM A	.34
39	36 CX4602 MAGNET RETAINER SCREW	.58
40	37 CX4257 MAGNET RETAINER	8.02
41	38 CX4251 SPOOL ASSY	12.46
42	40 NX4351 SET PLATE	17.14
43	41 NX4402 SPOOL RELEASE BUTTON	2.46
44	42 CX4664 RETAINER CLIP	.34
45	43 CX4353 SET PLATE ACT. SPRING	.34
46	44 CX4503-1 SET PLATE ACTUATOR B	1.14
47	45 CX4658-1 ANTI-REVERSE RATCHET	4.53
48	46 CX4661 DRAG WASHER A	.34
49	47 CX4662 DRIVE SHAFT SPR. WMBR	.34
50	48 CX4258 O RING	.34
51	49 CX4302 SPOOL TENSION SHIM B	.34
52	50 NX4259 SPOOL TENSION IDIOS	2.24
53	51 LX4703 HANDLE NUT LOCK	1.14
54	52 LX4704 HANDLE NUT LOCK SCR.	.46
55	53 CX4501-1 SET PLATE ACTUATOR A	1.14
56	54 NX4107 LEFT SIDE PLATE SPACER	1.72
57	55 CX4153 GEAR RETAINING CLIP	.29
	56 NX4150 WORN SHAFT GEAR	4.02
	57 BX4157 SPOOL SHFT BUSHING B	2.51

Prices subject to change without notice. Prices do not include postage and handling.

PLEASE ORDER BY PART NUMBER

Rev. 11/80

Zetec Division Brunswick Corporation, Box 270, Tulsa, OK 74101 USA 918-638-6881